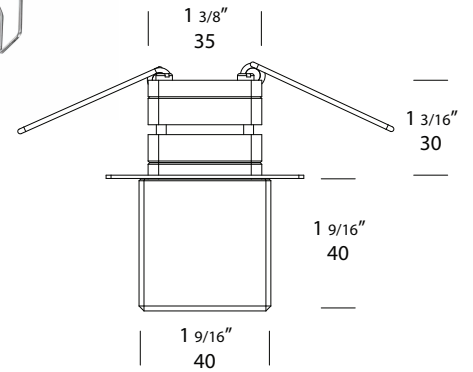
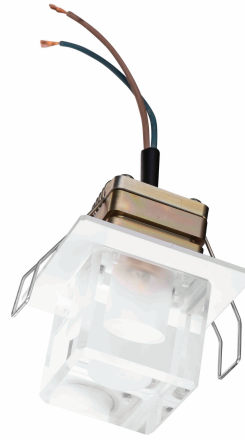


Cube Eave Lite PURE LED

| |
|----------|
| PROJECT: |
| TYPE: |
| SOURCE: |
| NOTES: |

SPECIFICATIONS



| | |
|----------------------------------|---|
| LED Chip | Cree XPG-3 Plug and Play field replaceable LED board |
| Luminaire Output Per Head | 200 Lumens @ 1050mA, delivered from luminaire with unobstructed beam. |
| Lumens Per Watt | 66 Lumens minimum @ 3 watts, delivered from luminaire with unobstructed beam |
| CRI (3000K) | 90+ |
| Colour Temperatures | 2700K, 3000K, 4000K |
| Beam Angles | 15, 25, 45 |
| Ingress Protection | IP66 |
| Warranty | Electronics = 5 years Body Aluminium = 5 years |
| Standards | AS/NZS 61046 cUL 1838, 2108, 1598 CSA 22.2 No. 250.7, No. 250.0-08, No. 250.0 CE |

PRODUCT CONFIGURATION

Please fill in appropriate codes into boxes provided

Cat. No. CEAVE/L

| Luminaire | Power | Material/ Finish | Beam | Colour | Accessories |
|-----------|-------|-------------------|--------|---------|---------------------|
| CEAVE/L | | | | | |
| S | | ALUMINIUM | 15 15° | 2 2700K | CJK CABLE JOINT KIT |
| | | EBK BLACK | 25 25° | 3 3000K | |
| | | EBZ BRONZE | 45 45° | 4 4000K | |
| | | EOGR OLIVE GREEN | | | |
| | | EWH WHITE | | | |
| | | EWB WHITE BIRCH | | | |
| | | EDG DARK GREY | | | |
| | | ESTAR SILVER STAR | | | |
| | | ECT CORTEN | | | |

SERIES, REMOTE DRIVER REQUIRED:
Constant current driver
Individual fixtures require 3vdc @ 1050mA maximum

ADDITIONAL COMMENTS:

LUMINAIRE CONSTRUCTION

CNC machined from one of the following metals:

Aluminium:

Flange: High corrosion resistant 40mm (1½") x 4mm (3/16") aluminium square tube, with chromate substrate and high UV resistant polyester powder coat.

Colours:

Black, Bronze, Silver Star, White, White Birch, Olive Green, Dark Grey, Corten.

Head/Lens:

40mm (1½") x 40mm (1½") acrylic.

Lifetime warranty.

Do not clean with petrochemical substances.

Gaskets:

Silicone, iron impregnated 220°C (428°F)

Mounting:

The fixture is designed to fit a 35mm hole and fixed into position by two spring clips.

Make a waterproof seal when fixing the flange against the ceiling.

Luminaire Weight:

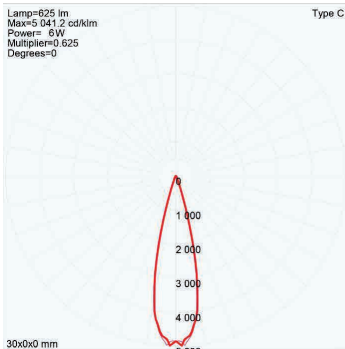
Alum: 0.775kg (1lb 11oz)

ACCESSORIES

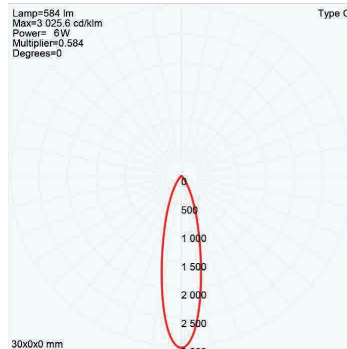
BEAM ANGLES

High efficiency PMMA TIR lenses. Field replaceable

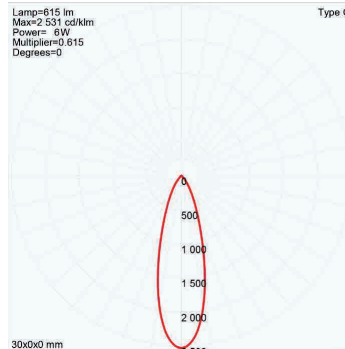
IES files available for download: <http://www.hunzalighting.com/download.php>



15° FWHM
TIR



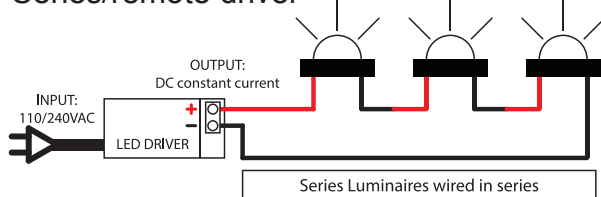
25° FWHM
TIR



45° FWHM
TIR

WIRING GUIDE

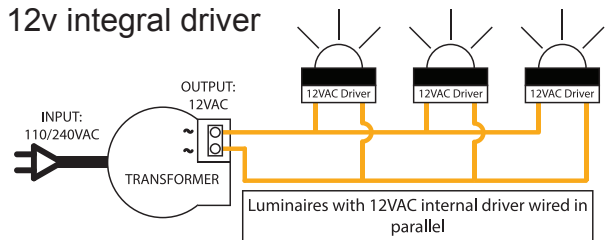
Series/remote driver



Diagrams are a guide only, wire colours and polarity may change depending on fixture and country

available for download: <http://www.hunzalighting.com/download.php>

12v integral driver



Specifications may change without notification

Aug 2017

HUNZA™ PURE OUTDOOR LIGHTING

HUNZA FACTORY 130 Felton Mathew Ave
Saint Johns
Auckland 1072
New Zealand

Ph: +64-9-528 9471
Fax: +64-9-528 9361
hunza@hunza.co.nz
www.hunzalighting.com

INTERNATIONAL CONTACTS:
<http://www.hunzalighting.com/contact.php>

This document contains proprietary information of Hunza. Its receipt or possession does not convey any rights to reproduce or disclose its content.