

Euro Twin Wall Spot

PROJECT: _____

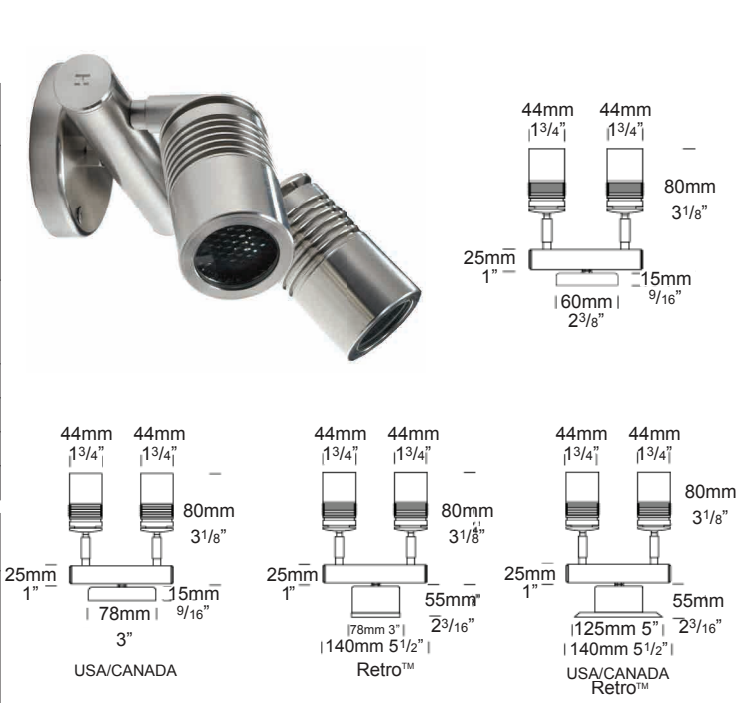
TYPE: _____

SOURCE: _____

NOTES: _____

PURELED SPECIFICATIONS PER HEAD

LED Chip	Cree XPG-50-2 Plug and Play field replaceable LED board
Luminaire Output	420 Lumens @ 700mA (4 watts), 240 Lumens @ 350mA (2 watts), delivered from luminaire with unobstructed beam.
Lumens Per Watt	105 Lumens minimum @ 4 watts, delivered from luminaire with unobstructed beam
CRI (3000K)	85+ Standard, 90+ Optional
Colour Temperatures	2700K, 3000K, 4000K
Beam Angles	15, 25, 38, 60
Ingress Protection	IP66
Warranty	Electronics = 5 years Body Cop/ SS = 10 years
Standards	AS/NZS 61046, EN60598 cUL 1838, 2108, 1598 CSA C22.2 No. 250.7, No. 250.0-08, No. 250.0 CE



PRODUCT CONFIGURATION

Please fill in appropriate codes into boxes provided

Cat. No. ETWS/L

Luminaire	Power	Material/ Finish	Beam	Colour	Accessories
ETWS/L					
S SERIES, REMOTE DRIVER		COP SOLID COPPER	15 15°	2 2700K	HCL HEX CELL LOUVRE
D3 12VAC, 2W INTEGRAL		SS STAINLESS STEEL	25 25°	3 3000K	LF FROSTED LENS
D7 12VAC, 4W INTEGRAL			38 38°	4 4000K	WBAP WALL BOX ADAPTOR
R RETRO, 110/240V DRIVER			60 60°	39 3000K, 90+ CRI	CJK CABLE JOINT KIT

SERIES, REMOTE DRIVER REQUIRED:
Constant current driver
Individual fixtures require 12vdc @ 700mA maximum

12VAC INTEGRAL DRIVER:
Hunza integrated Plug and Play Driver (included)
Input: 12VAC, 5watt total.
Output: 6vdc @ D3=350mA, D7=700mA

110/240VAC RETRO DRIVER:
Input: 120/240vac, 5 watt total (driver included)
Output: 12vdc, 700mA
0-10 volt dimming
(USA - non dimming)

OTHER LAMP OPTIONS:
ETWS/H - MR11 Halogen 12V Lamp
ETWS/M11L - MR11 LED Retrofit 12V Lamp (lamps vary by market - please refer to supplier for details)

Please click for Remote Power Supply Guidance Charts:
[USA \(page G\)](#)
[Rest of the World \(page G\)](#)

[Click here for halogen specification sheet](#)

LUMINAIRE CONSTRUCTION

CNC machined from one of the following metals:

Copper:

Body: 45.4mm x 80mm (1^{3/4}" x 3^{1/8}" copper rod.

Flange: 70mm (3^{1/2}" solid copper rod.

Base and Mounting Plate (Retro™): handspun 2mm (5/64") copper disk and forged brass.

316 Stainless Steel

Body: 45.4mm x 80mm (1^{3/4}" x 3^{1/8}" stainless steel rod.

Flange: 70mm (3^{1/2}" 316 stainless steel rod.

Base and Mounting Plate: investing cast and CNC machined 316 stainless steel.

Lens:

6mm (1/4") extra clear low iron flush fit shatter resistant glass. Add Hex Cell Louvre accessory for glare control.

Gaskets:

Silicone, iron impregnated 220°C (428°F)

Knuckles:

Copper luminaires: 360° rotation and 0-90° elevation, solid brass with anti rust spring.

Stainless Steel luminaires: 360° rotation and 0-90° elevation, full stainless steel construction.

Mounting:

12 volt: The luminaire is mounted to the wall using two 316 stainless screws through a shallow base 15mm (5/8") in depth. A Wall Box Adaptor Plate is available as an accessory to fit 3.0 and 4.0 Junction boxes for USA/Canada.

Retro™ (110/240-12volt): A mounting plate is fixed to the wall using two screws and the luminaire is fitted to the mounting plate.

Luminaire Weight:

Low Voltage

Cop: 0.700kg (1lb 9oz)

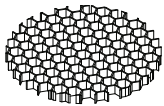
SS: 0.415kg (15oz)

Retro™

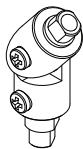
Cop: 1.120kg (2lb 8oz)

SS: 1.150kg (2lb 9oz)

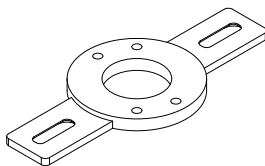
ACCESSORIES



Hex Cell Louvre



Locking Knuckle

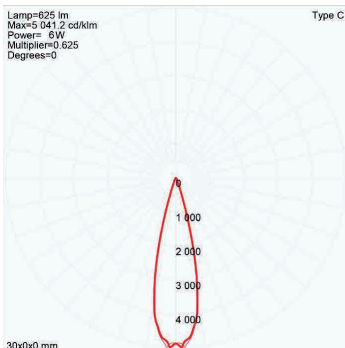


Wall Box Adaptor

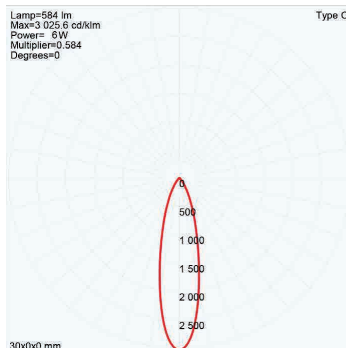
BEAM ANGLES

High efficiency PMMA TIR lenses. Field replaceable

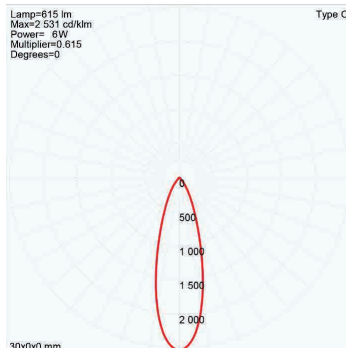
IES files available for download: <http://www.hunzalighting.com/download.php>



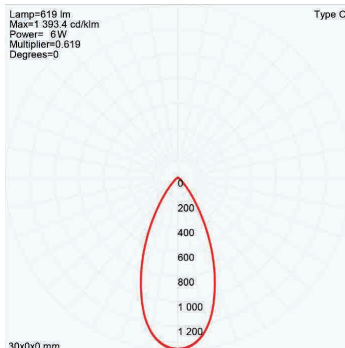
15° FWHM
TIR



25° FWHM
TIR



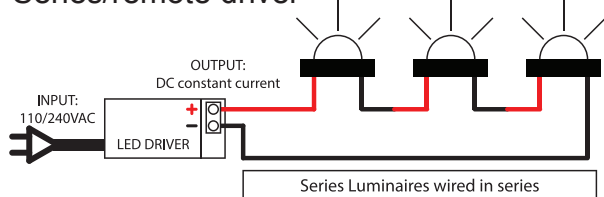
38° FWHM
TIR



60° FWHM
TIR

WIRING GUIDE

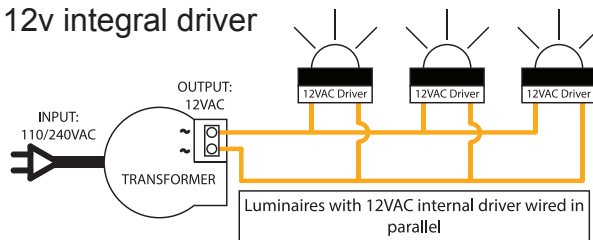
Series/remote driver



Diagrams are a guide only, wire colours and polarity may change depending on fixture and country

available for download: <http://www.hunzalighting.com/download.php>

12v integral driver



Specifications may change without notification

Aug 2017

HUNZA™ PURE OUTDOOR LIGHTING

HUNZA FACTORY

130 Felton Mathew Ave
Saint Johns
Auckland 1072
New Zealand

Ph: +64-9-528 9471
Fax: +64-9-528 9361
hunza@hunza.co.nz
www.hunzalighting.com

INTERNATIONAL CONTACTS:

<http://www.hunzalighting.com/contact.php>

This document contains proprietary information of Hunza. Its receipt or possession does not convey any rights to reproduce or disclose its content.