

## Mini Bollard PURE LED

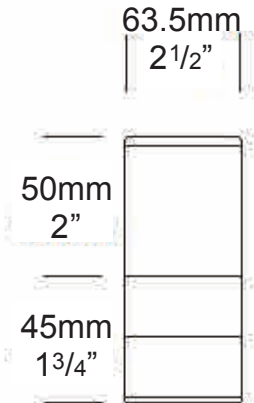
PROJECT:
TYPE:
SOURCE:
NOTES:

### SPECIFICATIONS



<b>LED Chip</b>	Cree XPG-3 Plug and Play field replaceable LED board
<b>Luminaire Output</b>	120 Lumens @ 700mA (2 watts), delivered from luminaire with unobstructed beam.
<b>Lumens Per Watt</b>	60 Lumens minimum @ 2 watts , delivered from luminaire with unobstructed beam
<b>CRI (3000K)</b>	85+ Standard, 90+ Optional
<b>Colour Temperatures</b>	2700K, 3000K, 4000K
<b>Beam Angles</b>	360 degrees
<b>Ingress Protection</b>	IP66

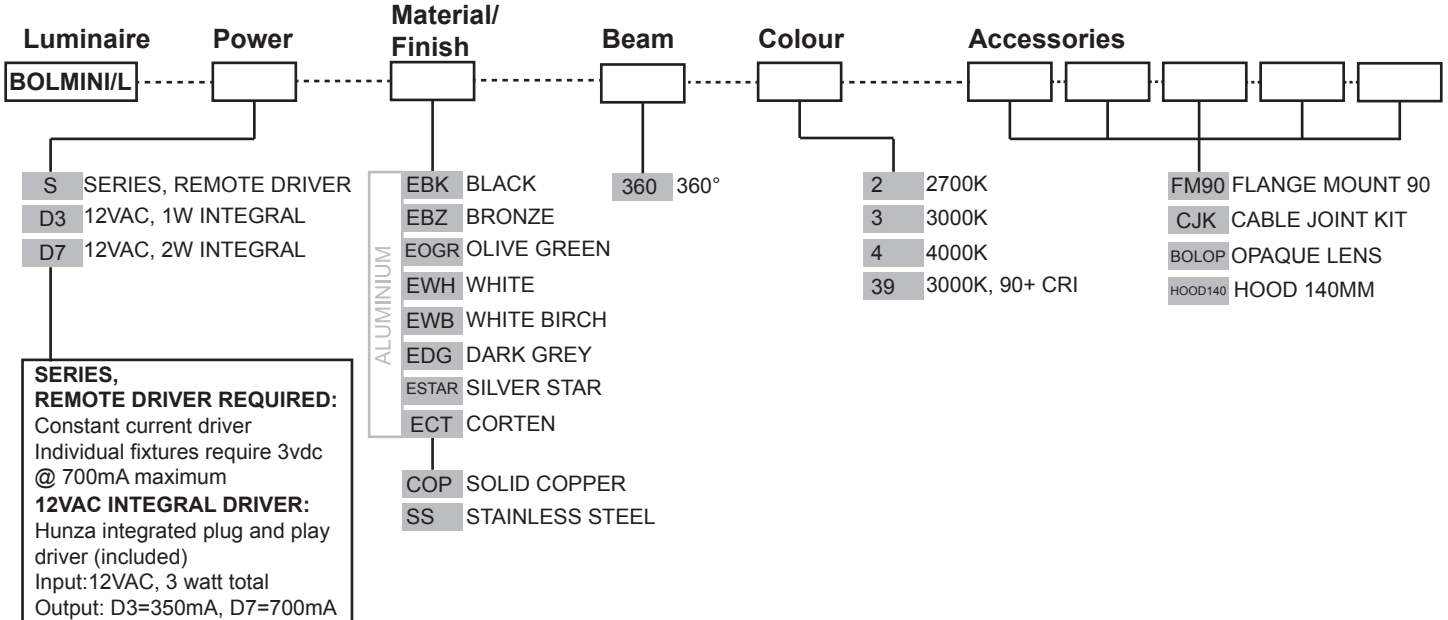
<b>Warranty</b>	Electronics = 5 years Body Cop/SS = 10 years Body Aluminium = 5 years
<b>Standards</b>	AS/NZS 61046 cUL 1838, 2108 CSA C22.2 No.250.7, No.250.0-08 CE



### PRODUCT CONFIGURATION

Please fill in appropriate codes into boxes provided

Cat. No. BOLMINI/L



**SERIES, REMOTE DRIVER REQUIRED:**  
Constant current driver  
Individual fixtures require 3vdc @ 700mA maximum

**12VAC INTEGRAL DRIVER:**  
Hunza integrated plug and play driver (included)  
Input: 12VAC, 3 watt total  
Output: D3=350mA, D7=700mA

ADDITIONAL COMMENTS:

[Please click for Hunza Power Supply selection Chart](#)  
[Please click for Hunza Voltage drop Chart](#)

# LUMINAIRE CONSTRUCTION

**CNC machined from one of the following metals:**

**Aluminium:**

Body: high corrosion resistant 63.5 (2½") x 10mm (3/8") aluminium.

End cap: solid aluminium 63.5 (2½") rod with chromate substrate and high UV resistant polyester powder coat.

Colours:

Black, Bronze, Silver Star, White, White Birch, Olive Green, Dark Grey, Corten.

**Copper:**

Body: solid copper 63.5mm (2½") x 10mm (3/8").

End cap: solid copper 63.5 (2½") rod.

**316 Stainless Steel**

Body: 316 stainless steel 63.5mm (2½") x 9mm (3/8").

End cap: 316 stainless steel 63.5 (2½") rod.

**Anti-glare hood:**

140mm (5½") x 1.2mm (1/16") handspun aluminium, copper or stainless steel. No upward light or glare projected.

**Lens:**

UV stable polycarbonate lens with anti-glare mesh and dual angle reflector projects light horizontally and at 45° onto the ground.

**Gaskets:**

Silicone, iron impregnated 220°C (428°F)

**Mounting**

To be mounted on top of posts, railings, etc. It is not suited for ground installation.

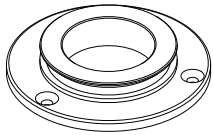
**Luminaire Weight:**

Alum: 0.370kg (13oz)

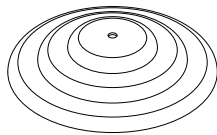
Cop: 0.600kg (1lb 5oz)

SS: 0.500kg (1lb 2oz)

## ACCESSORIES



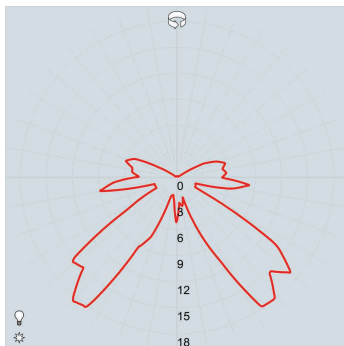
Flange Mount 90



Hood 140mm

## BEAM ANGLES

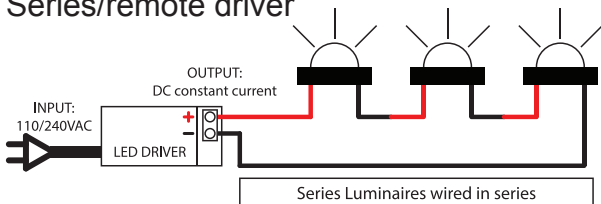
IES files available for download: <http://www.hunzalighting.com/download.php>



Polycarbonate lens

## WIRING GUIDE

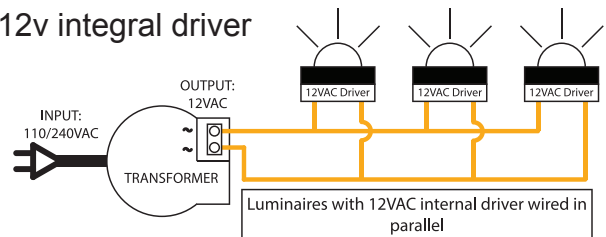
### Series/remote driver



Diagrams are a guide only, wire colours and polarity may change depending on fixture and country

available for download: <http://www.hunzalighting.com/download.php>

### 12v integral driver



Specifications may change without notification

Aug 2017