

**PAGODA LITE, PILLAR LITE, TWIN WALL SPOT, WALL
DOWN LITE, WALL SPOT LUMINAIRE
INSTALLATION INSTRUCTIONS**



UL1838 IP66

NOTE: THESE INSTRUCTIONS MUST NOT CONTRAVENE YOUR LOCAL ELECTRICAL AUTHORITY REGULATIONS, WITH WHICH ALL INSTALLATIONS HERE IN MUST COMPLY. PLEASE KEEP INSTRUCTIONS FOR FUTURE REFERENCE.

Due to the many and varying surfaces on buildings to which luminaires can be affixed, it is not possible to supply a gasket that will seal on brick concrete wood etc. Hence we advise using a silicone sealant that will not only adhere to the Wall Luminaire but also bond to the surface to which the fitting is fixed. Make a waterproof connection using heavy walled adhesive lined heat shrink. Make sure to use the rubber washers supplied under the mounting screws to stop water leaking into the base of the luminaire. If there is any possibility of water leaking down the cable track, the cable entry point must be sealed to make it watertight.

Recommendation:

It is recommended that high quality lamps or halogen capsules are used when replacing lamps or halogen capsules. Do not over tighten lens ring as this will make removal difficult and may cause lamp to break.

Junction Box Backplate : A back plate is available to fit the 4-0 Junction Box.

Warning: Make sure there is no possibility of water leaking down the cable track into the back of this luminaire.

Warning: Twin Lamp luminaires i.e. Twin Wall Spot can be supplied with two 35 watt lamps or two 20 watt lamps (check inside luminaire for 20 watt warning sticker) make certain that these luminaires are wired in a matched system.

Warning: Take care to place luminaire in a suitably safe position due to the high operating temperature of luminaire.

LAMP CHANGING

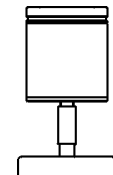
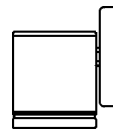
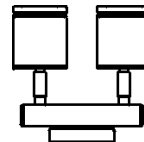
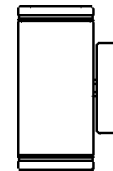
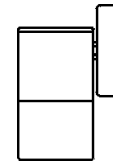
CAUTION: Make sure that the power to the luminaire is switched off before attempting to change the lamp. Beware of hot luminaire and lamp. Make absolutely sure when changing lamps that the correct wattage lamp is installed.

HALOGEN CAPSULE CHANGING (PAGODA LITE)

CAUTION: Make sure that the power to the luminaire is switched off before attempting to change the lamp. Beware of hot luminaire and lamp. Make absolutely sure when changing lamps that the correct wattage lamp is installed.

WARNING (PAGODA LITE): Do not touch halogen capsule with bare fingers, leave plastic bag over the capsule & push into the lamp holder. Then remove plastic bag before switching luminaire on.

Maximum Wattage 20watt G4 Halogen Capsule.



**PAGODA LITE, PILLAR LITE, TWIN WALL SPOT, WALL
DOWN LITE, WALL SPOT LUMINAIRE
INSTALLATION INSTRUCTIONS**



UL1838 IP66

NOTE: THESE INSTRUCTIONS MUST NOT CONTRAVENE YOUR LOCAL ELECTRICAL AUTHORITY REGULATIONS, WITH WHICH ALL INSTALLATIONS HERE IN MUST COMPLY. PLEASE KEEP INSTRUCTIONS FOR FUTURE REFERENCE.

LAMP CHANGING SEQUENCE (MR16)

Only use open faced lamps, not glass covered lamps, as glass covered lamps may cause luminaire to leak. Unscrew lens ring, remove gasket and lens. Pull lamp forward until the ceramic lamp holder appears. Hold lamp holder in one hand and remove lamp with other hand very carefully. Do not touch the glass capsule in the middle of the reflector when pushing the lamp back into the ceramic lamp holder. When replacing gasket and lens, make sure there is no dirt or grit on the gasket. Dirt or grit on the gasket may cause luminaire to leak.

GASKET AND LENS SEQUENCE

Place lens on top of lamp and put orange gasket on top of lens. Screw on lens ring.

GLARE GUARD INSTALLATION

Carefully remove the lens ring making sure not to drop the glass lens and cause damage to it, keeping gasket in place. Hold body of luminaire tightly and screw Glare Guard ring onto light luminaire. Still holding body of luminaire tightly rotate glare guard to desired position.

When Glare Guard is fitted, lamp wattage can be increased to 35 watt. This does not apply to the Pillar Lite.

Warning: Pillar Lite 20 watt max.

HEX CELL LOUVRE ADAPTOR INSTALLATION: Carefully remove the lens ring, making sure not to drop the glass lens and cause damage to it. Keep the orange gasket in place. Hold the body of the luminaire tightly and screw the "Hex Cell Adaptor" ring onto the luminaire. Place the Hex Cell into position and place the lens on top. Then put the orange gasket on top of the lens and screw the lens ring on.

Stainless Steel Maintenance: To maintain the finish of 316 stainless steel it is recommended to wash the luminaire with water from time to time to stop salt and corrosive elements building up. Stainless steel luminaires may over time develop a tint stain effect on the surface. This can easily be removed with a commercially available stainless steel cleaner.

**INSTRUCTIONS PERTAINING TO A RISK OF FIRE, OR INJURY TO PERSONS
IMPORTANT SAFETY INSTRUCTIONS**

Lighted lamp is HOT!

WARNING - To reduce the risk of FIRE OR INJURY TO PERSONS:

Turn off / unplug and allow to cool before replacing lamp.

Lamp gets HOT quickly! Contact only switch/plug when turning on.

DO NOT touch hot lens, guard or enclosure.

Keep lamp away from materials that may burn.

DO NOT touch the lamp at any time. Use a soft cloth. Oil from skin may damage lamp.

DO NOT operate the luminaire fitting with a missing or damaged lens.

