

STEP LITE, STEP LITE EYELID, STEP LITE SOLID EYELID PATH LITE (NO CANISTER) LUMINAIRES



UL1838 IP66

INSTALLATION INSTRUCTIONS

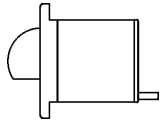
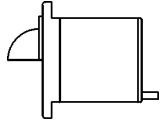
NOTE: THESE INSTRUCTIONS MUST NOT CONTRAVENE YOUR LOCAL ELECTRICAL AUTHORITY REGULATIONS, WITH WHICH ALL INSTALLATIONS HERE IN MUST COMPLY. PLEASE KEEP INSTRUCTIONS FOR FUTURE REFERENCE.

The secondary wiring supplied with this light fixture is intended for shallow burial - less than 6" (152mm). Do not install this light fixture within 10 feet (3 mtr.) of a pool, spa or fountain.

Drill a 2½ inch diameter hole (deep enough to house sufficient cable to facilitate lamp changing) and two mounting holes at 3 inch centres. Run the low voltage cable from the transformer to the Step Lite. Make a waterproof connection using heavy walled adhesive lined heat shrink. Coil up a small amount of cable behind the fitting to allow it to be removed for lamp changing and screw into position using rawlplugs and screws provided.

Recommendation: Run all low voltage cables in flexible conduit for extra protection.

Warning - Take care to place luminaire in a suitably safe position, due to operating temperature of luminaire.



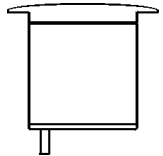
LAMP CHANGING

CAUTION: Make sure that the power to the luminaire is switched off before attempting to change the lamp. Beware of hot luminaire and lamp. Make absolutely sure when changing lamps that the correct wattage lamp is installed.

LAMP CHANGING SEQUENCE (MR16)

Only use open faced lamps, not glass covered lamps, as glass covered lamps may cause luminaire to leak. Unscrew flange, remove gasket and lens. Pull lamp forward until the ceramic lamp holder appears. Hold lamp holder in one hand and remove lamp with other hand very carefully. Do not touch the glass capsule in the middle of the reflector when pushing the lamp back into the ceramic lamp holder. When replacing gasket and lens, make sure there is no dirt or grit on the gasket. Dirt or grit on the gasket may cause luminaire to leak.

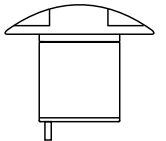
Warning: Maximum wattage 20 watt lamp.



GASKET AND LENS SEQUENCE Place lens on top of lamp and put orange gasket on top of lens. Screw on flange. It is recommended that high quality lamps are used when replacing lamps. Do not over tighten flange as this will make removal difficult and may cause lamp to break.

HEX CELL LOUVRE ADAPTOR INSTALLATION: Carefully remove the lens ring, making sure not to drop the glass lens and cause damage to it. Keep the orange gasket in place. Hold the body of the luminaire tightly and screw the "Hex Cell Adaptor" ring onto the luminaire. Place the Hex Cell into position and place the lens on top. Then put the orange gasket on top of the lens and screw the lens ring on.

Stainless Steel Maintenance: To maintain the finish of 316 stainless steel it is recommended to wash the luminaire with water from time to time to stop salt and corrosive elements building up. If tea staining appears, a commercially available stainless steel cleaner is recommended to remove this staining.



INSTRUCTIONS PERTAINING TO A RISK OF FIRE, OR INJURY TO PERSONS IMPORTANT SAFETY INSTRUCTIONS

Lighted lamp is HOT!

WARNING - To reduce the risk of FIRE OR INJURY TO PERSONS:

Turn off / unplug and allow to cool before replacing lamp.

Lamp gets HOT quickly! Contact only switch/plug when turning on.

DO NOT touch hot lens, guard or enclosure.

Keep lamp away from materials that may burn.

DO NOT touch the lamp at any time. Use a soft cloth. Oil from skin may damage lamp.

DO NOT operate the luminaire fitting with a missing or damaged lens.

