

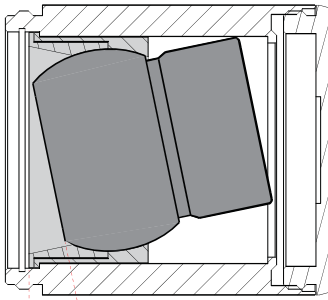
# TILTING MODULE PURE LED

Cat. No. TLTM



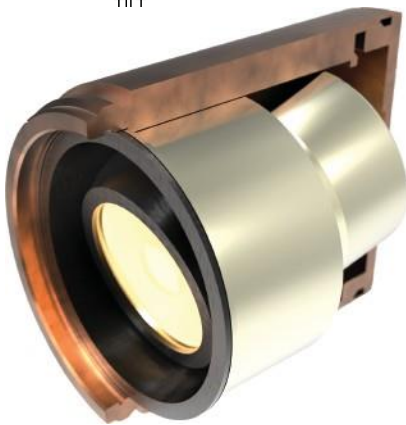
PURE LED  
Pure Performance

Section



≤12°

TILT



The Tilting Module is designed to fit into HUNZA 63.5mm (2.5") diameter PURE LED bodies. It allows 360° rotation and 12° tilt from centre. The spherical gimbal allows infinite beam correction for uneven surfaces and directional adjustment for glare control, particularly useful for Floor Lites, Pool Lites and Step Lites.

It is machined from solid aluminium to maximise heat dissipation, and features the Hunza multi-coat protection system, including chromate and anodised layers, for maximum corrosion resistance.

The HUNZA PURE LED system uses Cree MTG-2 chips for maximum performance and long life. Power supply options include a choice of integral 12VAC or 9-36VDC drivers and an external remote driver (series connection) option. The PURE LED system incorporates HUNZA's Plug-and-Play feature for easy replacement of either the LED engine or integral driver in the field. Four beam angles, and a choice of 2700K, 3000K or 4000K colour temperatures are available.

## Ordering Information

Module	Driver mA	Beam Angle	Colour Temp
TLTM	S - Series	15 - 15° TIR Lens	2 - 2700K
	D7 - 12VAC 700mA	25 - 25° TIR Lens	3 - 3000K
	DC7 - 9-36VDC 700mA	38 - 38° TIR Lens	4 - 4000K
	D10 - 12VAC 1050mA	60 - 60° TIR Lens	39 - 3000K (90+ CRI)

Ordering Example: TLTM S 15 4

**HUNZA**<sup>TM</sup>  
PURE  
OUTDOOR  
LIGHTING

HUNZA FACTORY  
130 Felton Mathew Ave  
Saint Johns  
Auckland 1072  
New Zealand

Ph: 64-9-528 9471  
Fax: 64-9-528 9361  
hunza@hunza.co.nz  
www.hunza.co.nz

INTERNATIONAL CONTACTS:  
[www.hunza.co.nz/contacts.php](http://www.hunza.co.nz/contacts.php)

Specifications may change without notice.  
Manufactured in New Zealand.  
© 2015 Hunza Holdings Ltd.

## Luminaire Construction

### CNC machined from:

#### Body:

High corrosion resistant 45mm (1 49/64"), solid aluminium rod. Anodised

#### Luminaire Weight

0.1kg

## Luminaire Features

### Mounting

This fitting is designed to fit into Hunza (only) PureLED universal bodies.

HUNZA's Plug-and-Play system allows easy replacement of either the LED engine or integral driver in the field.

## Standards

AS/NZS 61046

UL 1838, 2108

## LED

Cree MTG-2 Plug and Play, field replaceable LED board.

**Lumen Output:** 600 at 1050mA

**Lumens Per watt:** 100 minimum

**CRI Warm White (3000k):** 85+

**Colour Temp:** 2700K, 3000K and 4000K

**High CRI Option (3000K):** 90+  
(lumen output decreases by 15%)

## Power Supply

### Series (External) Driver

Constant current driver

Output: 6vdc at 1050mA maximum

### Integral 12 Volt Driver

Hunza™ Plug and Play Driver

Input: 12vac, 7 watt total

Output: 6vdc nominal,  
1050mA

### Integral 24 Volt Driver

Hunza™ Plug and Play Driver

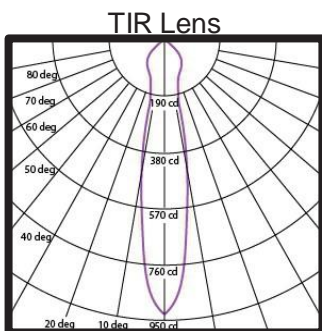
Input: 9-36vdc, 7 watt total

Output: 6vdc nominal,  
1050mA

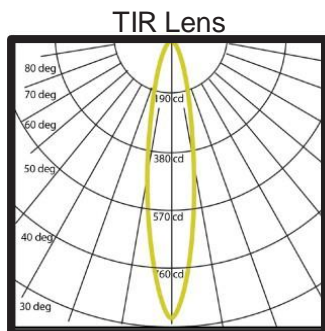
### Transformer

Hunza™ Wall Mount Transformer  
for use with integral 12 volt driver

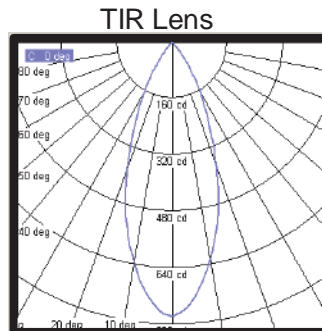
## Beam Angles



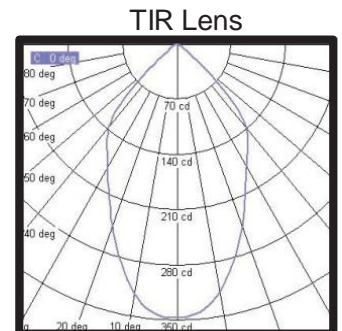
15° Angle  
3000 K



25° Angle  
3000 K



38° Angle  
3000 K



60° Angle  
3000 K

**HUNZA**™

PURE  
OUTDOOR  
LIGHTING

HUNZA FACTORY  
130 Felton Mathew Ave  
Saint Johns  
Auckland 1072  
New Zealand

Ph: 64-9-528 9471  
Fax: 64-9-528 9361  
hunza@hunza.co.nz  
www.hunza.co.nz

INTERNATIONAL CONTACTS:  
[www.hunza.co.nz/contacts.php](http://www.hunza.co.nz/contacts.php)

Specifications may change without notice.  
Manufactured in New Zealand.  
© 2015 Hunza Holdings Ltd.