

**RETRO™ PAGODA LITE, PILLAR LITE, TWIN WALL SPOT,  
WALL DOWN LITE, WALL SPOT LUMINAIRES**

**INSTALLATION INSTRUCTIONS**

(with built in electronic  
transformers)



**NOTE: THESE INSTRUCTIONS MUST NOT CONTRAVENE YOUR LOCAL ELECTRICAL AUTHORITY REGULATIONS, WITH WHICH ALL INSTALLATIONS HERE IN MUST COMPLY. PLEASE KEEP INSTRUCTIONS FOR FUTURE REFERENCE.**

Mount wall box adaptor onto wall box. Apply sufficient silicone sealant to the groove on the back of the mounting rack, to seal against the wall. Connect the phase (active) wire and the Neutral wire to the terminal block of the fitting. Assemble the luminaire onto the mounting plate (check that backplate gasket is in place) and use screws provided to secure luminaire. Make sure to use the rubber washers supplied under the mounting screws to stop water leaking into the luminaire.

- DO NOT** use a trailing edge ac. dimmer control. Only a leading edge dimmer unit is suitable.
- DO NOT** connect in close proximity to inductive loads. eg. air conditioning systems, water pumps etc. without appropriate mains filtering. Use a suppression interface module for every six luminaires connected to the circuit.
- DO NOT** carry out a Megger or insulation test on a circuit with a RETRO™ luminaires connected to it.
- DO NOT** connect to a circuit that has an electronic soft start motor starter on it.
- DO NOT** mount on a horizontal surface where water may collect or pool.
- DO NOT** connect to any Electronic Home System without checking that system's Manufacturer that is suitable for the control of this HUNZA fixture.

**Warning:** Do not suspend luminaire from Red and Black cables as this may cause luminaire to leak water into the head.

**Warning:** Twin lamp luminaires i.e. Twin Wall Spot, Pillar Lite have a 50 watt electronic transformer operating the lamps. If two 50 watt lamps are installed the luminaire will not operate, the electronic transformer has a built in safety shut down system that will not switch the lamps on when the power is applied. If this situation occurs -

- a) Switch power off.
- b) Remove lamps and replace with two 20 watt lamps & switch power on.

**Warning:** Make sure there is no possibility of water leaking down the cable track into the back of this luminaire.

**Warning:** Take care to place luminaire in a suitably safe position due to operating temperature of luminaire.  
**NOTE:** Due to the nature of electronics, the ambient temperature of the installation location must be considered carefully as the luminaire may not operate reliably at temperatures below -18°F (8°C).

**Stainless Steel Maintenance:** To maintain the finish of 316 stainless steel it is recommended to wash the luminaire with water from time to time to stop salt and corrosive elements building up. If tea staining appears, a commercially available stainless steel cleaner is recommended to remove this staining.

**LAMP CHANGING**

**CAUTION:** Make sure that the power to the luminaire is switched off before attempting to change the lamp. Beware of hot luminaire and lamp. Make absolutely sure when changing lamps that the correct wattage lamp is installed. i.e. 35 watt lamps are most common however RETRO™ luminaires e.g. Pillar Lite, Twin Wall Spot luminaires all have 20 watt lamps installed. Incorrect wattage lamps will cause RETRO™ luminaires not to illuminate due to overload.

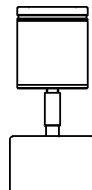
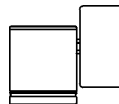
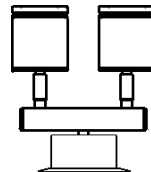
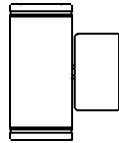
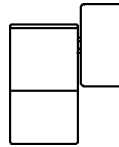
**INSTRUCTIONS PERTAINING TO A RISK OF FIRE, OR INJURY TO PERSONS  
IMPORTANT SAFETY INSTRUCTIONS**

Lighted lamp is HOT!

**WARNING - To reduce the risk of FIRE OR INJURY TO PERSONS:**

Turn off / unplug and allow to cool before replacing lamp.  
Lamp gets HOT quickly! Contact only switch/plug when turning on.  
**DO NOT** touch hot lens, guard or enclosure.

Keep lamp away from materials that may burn.  
**DO NOT** touch the lamp at any time. Use a soft cloth. Oil from skin may damage lamp.  
**DO NOT** operate the luminaire fitting with a missing or damaged lens.



**RETRO™ PAGODA LITE, PILLAR LITE, TWIN WALL SPOT,  
WALL DOWN LITE, WALL SPOT LUMINAIRES**

**INSTALLATION INSTRUCTIONS**

(with built in electronic  
transformers)



**NOTE: THESE INSTRUCTIONS MUST NOT CONTRAVENE YOUR LOCAL ELECTRICAL AUTHORITY REGULATIONS, WITH WHICH ALL INSTALLATIONS HERE IN MUST COMPLY. PLEASE KEEP INSTRUCTIONS FOR FUTURE REFERENCE.**

**LAMP CHANGING SEQUENCE (MR16)**

Only use open faced lamps, not glass covered lamps, as glass covered lamps may cause luminaire to leak. Unscrew lens ring, remove gasket and lens. Pull lamp forward until the ceramic lamp holder appears. Hold lamp holder in one hand and remove lamp with other hand very carefully. Do not touch the glass capsule in the middle of the reflector when pushing the lamp back into the ceramic lamp holder. When replacing gasket and lens, make sure there is no dirt or grit on the gasket. Dirt or grit on the gasket may cause luminaire to leak.

**GASKET AND LENS SEQUENCE**

Place lens on top of lamp and put orange gasket on top of lens. Screw on lens ring. It is recommended that high quality lamps are used when replacing lamps. Do not over tighten lens ring as this will make removal difficult and may cause lamp to break.

**HALOGEN CAPSULE CHANGING (PAGODA LITE)**

**CAUTION:** Make sure that the power to the luminaire is switched off before attempting to change the lamp. Beware of hot luminaire and lamp. Make absolutely sure when changing lamps that the correct wattage lamp is installed. Incorrect wattage halogen capsules may cause transformers to overload, causing the transformers to heat up and turn the luminaires off .

**WARNING:** Do not touch halogen capsule with bare fingers, leave plastic bag over the capsule & push into the lamp holder. Then remove plastic bag before switching luminaire on.  
Maximum Wattage 20watt G4 Halogen Capsule.

**GLARE GUARD INSTALLATION**

Carefully remove the lens ring making sure not to drop the glass lens and cause damage to it, keeping gasket in place. Hold body of luminaire tightly and screw Glare Guard ring onto light luminaire. Still holding body of luminaire tightly rotate glare guard to desired position.

When Glare Guard is fitted, lamp wattage can be increased to 35 watt. This does not apply to the Pillar Lite.

**Warning:** Pillar Lite 20 watt max.

**HEX CELL LOUVRE ADAPTOR INSTALLATION:**

Carefully remove the lens ring, making sure not to drop the glass lens and cause damage to it. Keep the orange gasket in place. Hold the body of the luminaire tightly and screw the "Hex Cell Adaptor" ring onto the luminaire. Place the Hex Cell into position and place the lens on top. Then put the orange gasket on top of the lens and screw the lens ring on.

**INSTRUCTIONS PERTAINING TO A RISK OF FIRE, OR INJURY TO PERSONS  
IMPORTANT SAFETY INSTRUCTIONS**

Lighted lamp is HOT!

**WARNING - To reduce the risk of FIRE OR INJURY TO PERSONS:**

Turn off / unplug and allow to cool before replacing lamp.  
Lamp gets HOT quickly! Contact only switch/plug when turning on.  
**DO NOT** touch hot lens, guard or enclosure.

Keep lamp away from materials that may burn.  
**DO NOT** touch the lamp at any time. Use a soft cloth. Oil from skin may damage lamp.  
**DO NOT** operate the luminaire fitting with a missing or damaged lens.

