

INGROUND 1-11 LUMINAIRE INSTALLATION INSTRUCTIONS

NOTE: THESE INSTRUCTIONS MUST NOT CONTRAVENE YOUR LOCAL ELECTRICAL AUTHORITY REGULATIONS, WITH WHICH ALL INSTALLATIONS HERE IN MUST COMPLY. PLEASE KEEP INSTRUCTIONS FOR FUTURE REFERENCE.

The Inground 1-11 is designed to be mounted level with the finished level of concrete, paving, asphalt or ground level etc. The flange is removed by using the allen key supplied to remove the four allen head screws in the flange and the luminaire is fixed into the mounting canister by two self tapping screws.

Remove the luminaire from the mounting canister and place the mounting canister in the desired position. Make certain that there is drainage material beneath the mounting canister to stop water building up inside the mounting canister. If the luminaire is to be driven over-concrete must be placed around the mounting canister and up under canister the rim to take the weight of the vehicle. Drive over speed is limited to 10 kph and the vehicle weight must not exceed 1500kg. Connections to the mains must be carried out by a licensed electrician. A waterproof cable joint must be made to stop the luminaire drawing water up the input cable. Fix the luminaire into the mounting canister using the two self tapping screws provided and adjust the lamp to the desired angle, replace lens and flange.

DECK MOUNTING VERSION

Cut a 165mm hole in the deck timber. Fix the luminaire into the deck timber using the two self tapping screws provided and adjust the lamp to the desired angle, replace lens and flange. Connections to the mains must be carried out by a licensed electrician. A waterproof cable joint must be made to stop the luminaire drawing water up the input cable.

The Deck mount version is not suitable for driving over.

Warning - Take care to place the luminaire in a suitably safe position due to operating temperature of the luminaire. When replacing the lamp - make sure to seat the lamp correctly between the two holding bars of the lampholder cradle to avoid shorting out the power supply. The lens must not be covered with flammable material.

DO NOT water blast/jet wash this fixture under any circumstances.

Stainless Steel Maintenance: To maintain the finish of 316 stainless steel it is recommended to wash the luminaire with fresh water from time to time to stop salt and corrosive elements building up. If tea staining appears, a commercially available stainless steel cleaner is recommended to remove this. Electro polishing is recommended in this situation but the fitting will still require regular maintenance. Even an electro polished stainless steel fixture under an eave or roof will suffer from the build up of salt deposits as it will not be washed away by rain.

LAMP CHANGING

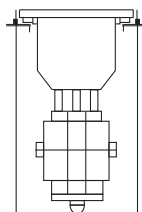
CAUTION: Make sure that the power to the luminaire is switched off before attempting to change the lamp. Beware of hot luminaire and lamp. Make absolutely sure when changing lamps that the correct wattage lamp is installed.

It is recommended that high quality lamps are used when replacing lamps.

Lamp Changing Sequence IG 1-11: The flange is removed by using the allen key supplied to remove the four allen head screws in the flange and the luminaire is fixed into the mounting canister by two self tapping screws. Remove lamp using cross bar on lamp.

CAUTION: Lamp may be hot!

Disconnect spade terminals from lamp, reconnect to new lamp and use cross bar on lamp



INGROUND 1-11 LUMINAIRE INSTALLATION INSTRUCTIONS

NOTE: THESE INSTRUCTIONS MUST NOT CONTRAVENE YOUR LOCAL ELECTRICAL AUTHORITY REGULATIONS, WITH WHICH ALL INSTALLATIONS HERE IN MUST COMPLY. PLEASE KEEP INSTRUCTIONS FOR FUTURE REFERENCE.

The Inground 1-11 is designed to be mounted level with the finished level of concrete, paving, asphalt or ground level etc. The flange is removed by using the allen key supplied to remove the four allen head screws in the flange and the luminaire is fixed into the mounting canister by two self tapping screws.

Remove the luminaire from the mounting canister and place the mounting canister in the desired position. Make certain that there is drainage material beneath the mounting canister to stop water building up inside the mounting canister. If the luminaire is to be driven over concrete must be placed around the mounting canister and up under canister the rim to take the weight of the vehicle. Drive over speed is limited to 10 kph and the vehicle weight must not exceed 1500kg. Connections to the mains must be carried out by a licensed electrician. A waterproof cable joint must be made to stop the luminaire drawing water up the input cable. Fix the luminaire into the mounting canister using the two self tapping screws provided and adjust the lamp to the desired angle, replace lens and flange.

DECK MOUNTING VERSION

Cut a 165mm hole in the deck timber. Fix the luminaire into the deck timber using the two self tapping screws provided and adjust the lamp to the desired angle, replace lens and flange. Connections to the mains must be carried out by a licensed electrician. A waterproof cable joint must be made to stop the luminaire drawing water up the input cable.

The Deck mount version is not suitable for driving over.

Warning - Take care to place the luminaire in a suitably safe position due to operating temperature of the luminaire. When replacing the lamp - make sure to seat the lamp correctly between the two holding bars of the lampholder cradle to avoid shorting out the power supply. The lens must not be covered with flammable material.

DO NOT water blast/jet wash this fixture under any circumstances.

Stainless Steel Maintenance: To maintain the finish of 316 stainless steel it is recommended to wash the luminaire with fresh water from time to time to stop salt and corrosive elements building up. If tea staining appears, a commercially available stainless steel cleaner is recommended to remove this. Electro polishing is recommended in this situation but the fitting will still require regular maintenance. Even an electro polished stainless steel fixture under an eave or roof will suffer from the build up of salt deposits as it will not be washed away by rain.

LAMP CHANGING

CAUTION: Make sure that the power to the luminaire is switched off before attempting to change the lamp. Beware of hot luminaire and lamp. Make absolutely sure when changing lamps that the correct wattage lamp is installed.

It is recommended that high quality lamps are used when replacing lamps.

Lamp Changing Sequence IG 1-11: The flange is removed by using the allen key supplied to remove the four allen head screws in the flange and the luminaire is fixed into the mounting canister by two self tapping screws. Remove lamp using cross bar on lamp.

CAUTION: Lamp may be hot!

Disconnect spade terminals from lamp, reconnect to new lamp and use cross bar on lamp to replace into lamp cradle.

