

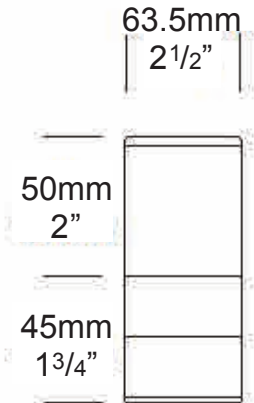
Mini Bollard

PROJECT:
TYPE:
SOURCE:
NOTES:

PURELED SPECIFICATIONS

LED Chip	Cree XPG-3 Plug and Play field replaceable LED board
Luminaire Output	120 Lumens @ 700mA (2 watts), delivered from luminaire with unobstructed beam.
Lumens Per Watt	60 Lumens minimum @ 2 watts , delivered from luminaire with unobstructed beam
CRI (3000K)	90+
Colour Temperatures	2700K, 3000K, 4000K
Beam Angles	360 degrees
Ingress Protection	IP66

Warranty	Electronics = 5 years Body Cop/SS = 10 years Body Aluminium = 5 years
Standards	AS/NZS 61046 cUL 1838, 2108 CSA C22.2 No.250.7, No.250.0-08 CE



PRODUCT CONFIGURATION

Please fill in appropriate codes into boxes provided

Cat. No. BOLMINI/L

Luminaire	Power	Material/ Finish	Beam	Colour	Accessories
<input type="text" value="BOLMINI/L"/>	<input type="text"/>	<input type="text"/>	<input type="text"/>	<input type="text"/>	<input type="text"/>
<ul style="list-style-type: none"> <input type="checkbox"/> S SERIES, REMOTE DRIVER <input type="checkbox"/> D3 12VAC, 1W INTEGRAL <input type="checkbox"/> D7 12VAC, 2W INTEGRAL 		<ul style="list-style-type: none"> <input type="checkbox"/> EBK BLACK <input type="checkbox"/> EBZ BRONZE <input type="checkbox"/> EOGR OLIVE GREEN <input type="checkbox"/> EWH WHITE <input type="checkbox"/> EWB WHITE BIRCH <input type="checkbox"/> EDG DARK GREY <input type="checkbox"/> ESTAR SILVER STAR <input type="checkbox"/> ECT CORTEN <input type="checkbox"/> COP SOLID COPPER <input type="checkbox"/> SS STAINLESS STEEL 	<ul style="list-style-type: none"> <input type="checkbox"/> 360 360° 	<ul style="list-style-type: none"> <input type="checkbox"/> 2 2700K <input type="checkbox"/> 3 3000K <input type="checkbox"/> 4 4000K 	<ul style="list-style-type: none"> <input type="checkbox"/> CJK CABLE JOINT KIT <input type="checkbox"/> BOLOP OPAQUE LENS <input type="checkbox"/> HOOD140C HOOD 140MM CONTOURED <input type="checkbox"/> HOOD140S HOOD 140MM SMOOTH <input type="checkbox"/> FM90 EXTERNAL FLANGE MOUNT 90

OTHER LAMP OPTIONS:
 BOLMINI/H - G4 Halogen 12V Lamp
 BOLMINI/GL - G4 LED Retrofit 12V Lamp (lamps vary by market - please refer to supplier for details)

[Click here for halogen specification sheet](#)

[Click here for 240v Remote Power Supply Guidance Charts](#)

[Click here for USA Remote Power Supply Guidance Charts](#)

LUMINAIRE CONSTRUCTION

CNC machined from one of the following metals:

Aluminium:

Body: high corrosion resistant 63.5 (2½") x 10mm (3/8") aluminium.

End cap: solid aluminium 63.5 (2½") rod with chromate substrate and high UV resistant polyester powder coat.

Colours:

Black, Bronze, Silver Star, White, White Birch, Olive Green, Dark Grey, Corten.

Copper:

Body: solid copper 63.5mm (2½") x 10mm (3/8").

End cap: solid copper 63.5 (2½") rod.

316 Stainless Steel

Body: 316 stainless steel 63.5mm (2½") x 9mm (3/8").

End cap: 316 stainless steel 63.5 (2½") rod.

Anti-glare hood:

140mm (5½") x 1.2mm (1/16") handspun aluminium, copper or stainless steel. No upward light or glare projected.

Lens:

UV stable polycarbonate lens with anti-glare mesh and dual angle reflector projects light horizontally and at 45° onto the ground.

Gaskets:

Silicone, iron impregnated 220°C (428°F)

Mounting

To be mounted on top of posts, railings, etc. It is not suited for ground installation.

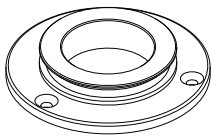
Luminaire Weight:

Alum: 0.370kg (13oz)

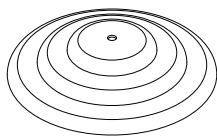
Cop: 0.600kg (1lb 5oz)

SS: 0.500kg (1lb 2oz)

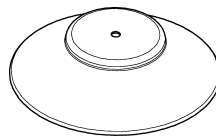
ACCESSORIES



Flange Mount 90



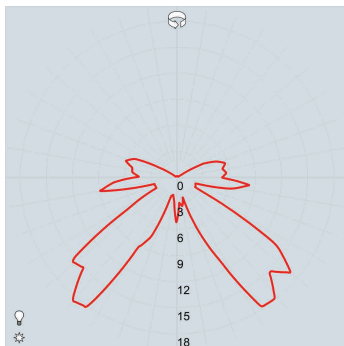
Hood 140mm Contoured



Hood 140mm Smooth

BEAM ANGLES

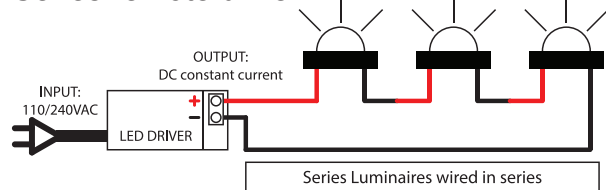
IES files available for download: hunzalighting.com/downloads



Polycarbonate lens

WIRING GUIDE

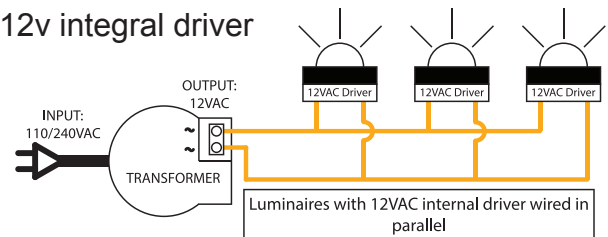
Series/remote driver



Diagrams are a guide only, wire colours and polarity may change depending on fixture and country

Available for download: hunzalighting.com/downloads

12v integral driver



Specifications may change without notification

Aug 2017