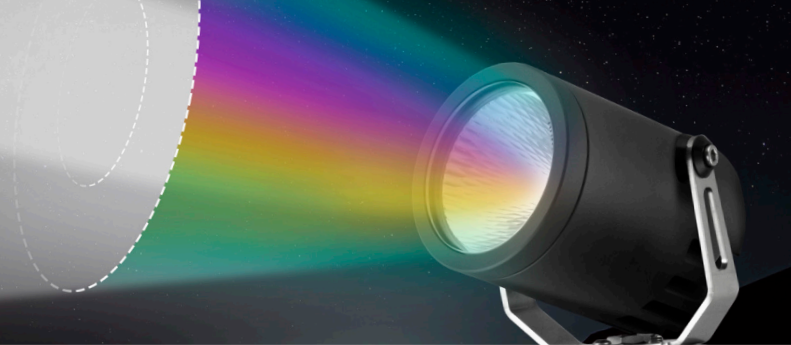


Ultra 35 Liquid Beam™ Spot Light - RGBW

INTELLIGENT LUMINAIRE

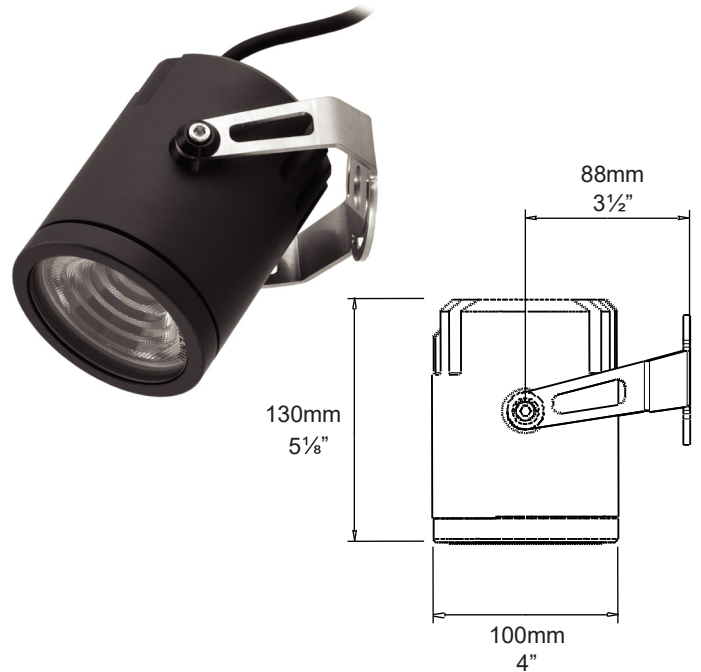


SPECIFICATIONS



LED Chip	LED ENGINE LZ4 RGBW
Luminaire Output	400 total Lumens all colours on, delivered from the Luminaire with unobstructed beam
Lumens Per Watt	30 Lumens minimum @ 13 watts, delivered from Luminaire with unobstructed beam
CRI (5400K)	RGBW (White 75)
Colour Temperatures	RGBW (White CCT 5400)
Beam Angles	Liquid Beam™ Technology Solid State Control 10 to 50 Deg
Ingress Protection	IP66

Warranty	Electronics = 5 years Body Aluminium = 5 years
Standards	BS/EN 60598.2.2 cUL 2108 CE



CASAMBI +

Smart Lighting Bluetooth Ecosystem

Liquid Beam™

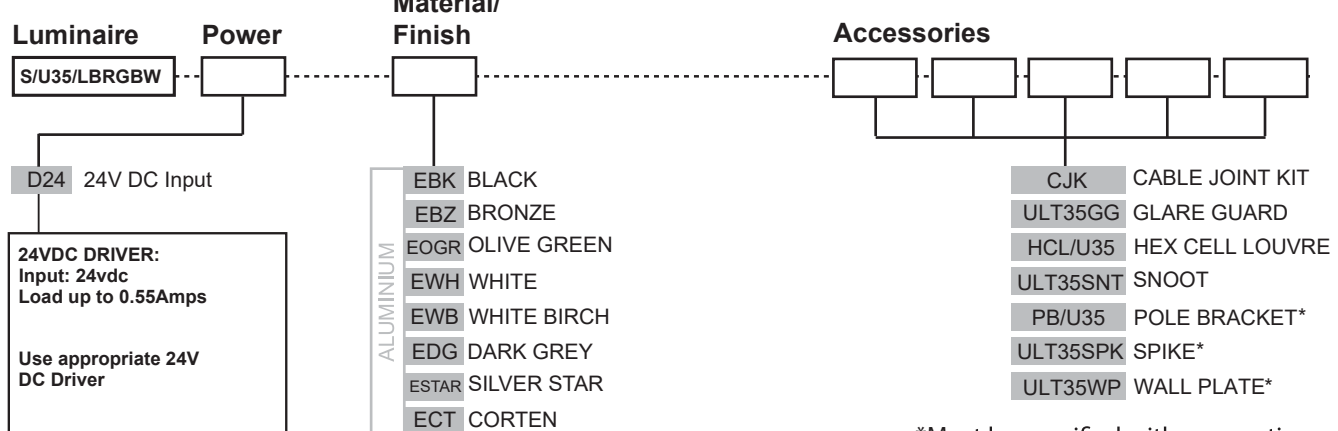
A Solid State Light Beam controlled via Bluetooth, adjustable between 10-50 degrees. No need to service the fixture to adjust the beam.

The Ultra 35 RGBW Spot must be specified with a mounting accessory.

PRODUCT CONFIGURATION

Please fill in appropriate codes into boxes provided

Cat. No. S/U35/LBRGBW



*Must be specified with a mounting accessory

ADDITIONAL COMMENTS:

Full hue spectrum & colour temperature control with Casambi. Bluetooth Mesh enabled via CASAMBI (free to download Lighting Control App) 10-50 Degree beam angle control with Liquid Beam™ Solid State Control. 24V Input only. No external control gear required.

LUMINAIRE CONSTRUCTION

CNC machined from one of the following metals:

Aluminium:

Body: 101mm (4") high corrosion resistant aluminium rod with chromate substrate and high UV resistant polyester powder coat.
Colours: Black, Bronze, Silver Star, White, White Birch, Olive Green, Dark Grey, Corten.

316 Stainless Steel:

Bracket: laser cut and folded 316 stainless steel.

Adjustability:

The fully adjustable head allows 120 degree rotation and 0-120 degree elevation.

Cable:

Water resistant rubber.

Gaskets:

Silicone, iron impregnated 220°C (428°F).

Step Lens:

12mm (1/2") extra clear, low iron, shatter resistant glass.
Lifetime warranty.

Mounting:

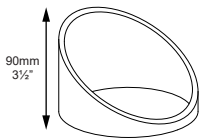
The mounting bracket is fixed to the surface using two stainless steel screws.
Pole Bracket - mount to pre-installed poles.
Spike - mount into the earth/soft ground.
Wall Plate - mount over junction boxes.

Luminaire Weight:

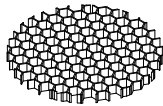
4kg (9lb)

ACCESSORIES

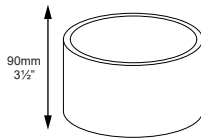
*Must be specified with a mounting accessory



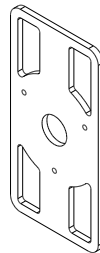
Glare Guard



Hex Cell Louvre



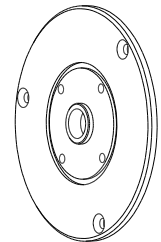
Snoot



Pole Bracket*



Spike*

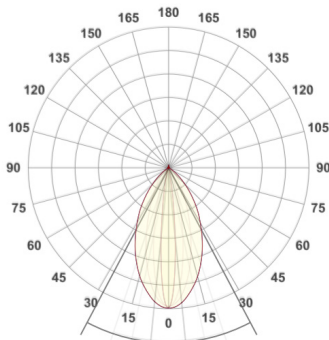


Wall Plate*
127mm (5")

BEAM ANGLES: Controlled with Liquid Beam™ Technology

Solid State Beam control Via Bluetooth Casambi App

IES files available for download: <http://www.hunzalighting.com/download.php>

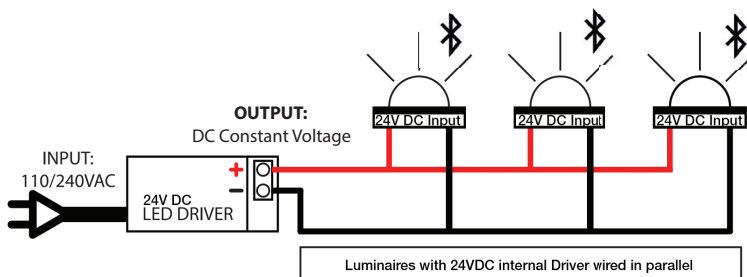


10° 3648° 50°

Adjustable between 10° to 50°

WIRING GUIDE

Available for download: www.hunzalighting.com/download.php



Luminaires with 24VDC internal Driver wired in parallel



CASAMBI

Try CASAMBI Smart Light Demo
Free to Download on IOS or Android



Specifications may change without notification

Oct 2021 V1

HUNZA™ PURE OUTDOOR LIGHTING

HUNZA FACTORY 130 Felton Mathew Ave
Saint Johns
Auckland 1072
New Zealand

Ph: +64-9-528 9471
Fax: +64-9-528 9361
hunza@hunza.co.nz
www.hunzalighting.com

INTERNATIONAL CONTACTS:
<http://www.hunzalighting.com/contact.php>

This document contains proprietary information of Hunza. Its receipt or possession does not convey any rights to reproduce or disclose its content.