

The latest news from Hunza Lighting.

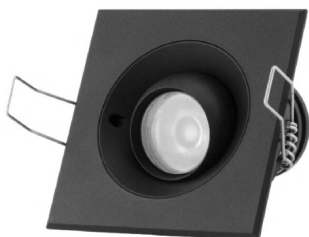
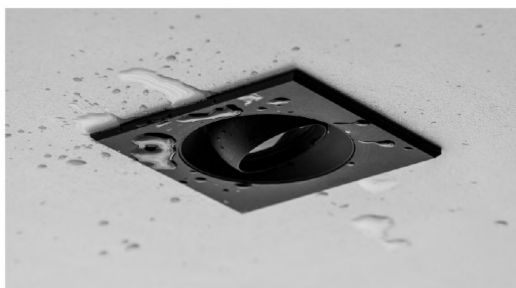


Hunza Horizons December 2017

Hunza creates lighting systems that make life easier and more pleasurable. Hunza Horizons is designed to update you on the latest exciting developments from the world of Hunza.

Product Spotlight: Recessed Washer / Flush Mount

The Hunza Washer has been many months in development to achieve a low profile fitting with minimal glare, perfectly suited for washing light over flat surfaces. The luminaire utilizes a special asymmetric optic to direct light towards the desired surface (be it horizontal or vertical plane). Black iron sand powder coat reduces internal surface luminance and a glare shield clips all backwards spill light. Other features include field replaceable Cree LED and built in anti-syphon to eliminate the potential for water to wick up the cable. The result is a fitting that is very comfortable on the eye and perfect for pedestrian areas where low glare is essential.



New Product Launch: Square Tilting Eave 6W

We are proud to announce that we have added a square version to our Tilting Eave range. The Square Tilting Eave 6W incorporates all the features of the Round version, with an 88mm (3½") x 88mm (3½") square outer flange. The square shape works well in modern installations and

is available in Copper, 316 Stainless and Powder Coated Aluminium.

New Hunza Arch Bollard I-Beam

Hunza is pleased to announce the addition of the I-Beam bollard to the Arch range.

Sharing the many great features of the Arch Bollard family, the I-Beam shaped pole makes for a more industrial looking bollard.

The new shape and corten powder coat option blend perfectly with architectural features that use exposed steel.

Available now in all standard Hunza powder coat colours.



New Hunza ST150 Internal Snoot Accessory

The new internal Snoot accessory can be added to any standard ST150 to dramatically reduce glare and spill light.

The Snoot fits onto the internal Gimbal while still allowing full spherical tilt. A specific glare shield is included and fitted to the lens to further reduce glare.

The snoot is perfect for when the fixture is used in pedestrian areas to minimise discomfort to the eye.



Hunza PureLED Specification Sheet Improvement

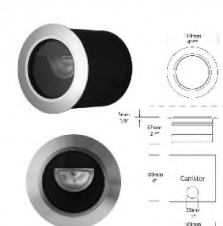
We have been working on upgrading our PureLED Specification Sheets. These new Spec Sheets now include a configurator which allows specifiers to directly enter the specific part number information into the PDF to build the catalogue number and print out the completed form. We have also included spaces on the form where specifiers can fill in project information to customise it to their requirements.

HUNZA PURE OUTDOOR LIGHTING
Washer
PURE LED

SPECIFICATIONS IK10 IP68 CE RoHS

LED Chip	Cree CJA 1304 field replaceable LED board
Luminaire Output	600 Lumens @ 1050mA @ 9 watts, Delivered from Luminaire with unobstructed beam.
Lumens Per Watt	66 Lumens minimum @ 9 watts, Delivered from Luminaire with unobstructed beam.
CRI (300K)	80 Standard, 90+ Optional
Colour Temperature	2700K, 3000K, 4000K
Beam Angles	Asymmetric Wash
Ingress Protection	IP68
Inverse Kinematics Rating	IK10
Maximum Load	2000ops (4000hrs)
Warranty	Electronics - 5 years Body Cop/SS - 10 years Body Aluminium - 5 years
Standards	BS EN 60598-2-2 UL 1838, 2108 Pending CE

PROJECT: _____
TYPE: _____
SOURCE: _____
NOTES: _____



PRODUCT CONFIGURATION Please fill in appropriate codes into boxes provided

Cat. No. WASH/L

Luminaire	Power	Material Finish	Beam	Colour	Accessories
WASH/L			AS		

S SERIES, REMOTE DRIVER
DS 12VAC, 3W INTEGRAL
DSI 12VAC, 6W INTEGRAL
DSII 12VAC, 9W INTEGRAL

ALL MATERIALS
EB BLACK
EBZ BRONZE
EBG OLIVE GREEN
EW WHITE
EWB WHITE BIRCH
EDK DARK GREY
ESG SILVER STAR
EC CORTEN
SC SOLID COPPER
SS STAINLESS STEEL

AS Beam: 0 270K, 3 300K, 4 400K, 5 300K, 60+ CRI

LF FRONTED LENS
CKJ CABLE JOINT KIT
CSB CABLE JOINT KIT

REMOTE DRIVER REQUIRED: Constant output driver
 Individual fixture requires 9vdc @ 1050mA maximum
 12VAC INTEGRAL DRIVER: Transformer required
 Hunza integrated plug and play driver
 Input: 0-12VAC
 Output: 9vdc @ 0.3-300mA, 0.7-700mA, 0.1-1050mA
 1100mA limited up to 40°C (154°F) ambient temperature in Stainless Steel

ADDITIONAL COMMENTS: _____

[Hunza Power Supply Selection Chart](#)
[Hunza Voltage Drop Chart](#)

HUNZA PURE OUTDOOR LIGHTING

HUNZA FACTORY 130 Main Highway, New Plymouth, New Zealand
 Ph: 06 320 5211 Fax: 06 320 5211
 Email: info@hunza.co.nz Website: www.hunzalighting.com

INTERNATIONAL CONTACTS: 107 Church Street, New Plymouth, New Zealand
 Ph: 06 320 5211 Fax: 06 320 5211
 Email: info@hunza.co.nz Website: www.hunzalighting.com

HUNZA™ PURE OUTDOOR LIGHTING



PURE NEW ZEALAND LIGHT™



Hunza Christmas Holiday, December 22 2017 to January 22 2018

The office and factory will be closed from the 22nd of December 2017 to the 22nd of January 2018 for the Christmas and New Year holiday period.

We hope you all have a very happy Christmas and New Year!



Please reply to this email or contact your local sales manager for more information.

Want to change how you receive these emails?

You can [update your preferences](#) or [unsubscribe from this list](#)

This email was sent to frank@hunza.co.nz
[why did I get this?](#) [unsubscribe from this list](#) [update subscription preferences](#)

Hunza · 130 Felton Mathew · Auckland, Auk 1072 · New Zealand

The MailChimp logo is displayed in a white, cursive font within a dark grey rounded rectangular button.